

# BioFX® TMB Enhanced HRP Membrane Substrate (ESPM)

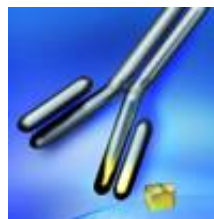
**2011 LifeScience Alley Conference & Expo**

**New Technology Showcase Winner**

**December 7, 2011**

# SurModics IVD Business

SurModics provides the world's foremost innovative *in vitro* diagnostic assay components and technologies enabling the world's leading and emerging diagnostic, medical device, pharmaceutical, and life science companies to create exceptional products and systems.



- **Stabil™** Family Protein stabilization reagents
- **BioFX®** colorimetric and chemiluminescent substrates
- **CodeLink®** microarray slides
- **DIARECT™** autoimmune antigens
- **BioFX®** secondary antibodies
- **BioFX®** blocks, diluents, wash solutions, and stop reagents

# Quality Assurance – ISO Certification

SurModics IVD adheres to strict quality standards.

All products manufactured under strict ISO Guidelines



## FDA

- Compliant to 21 CFR Part 820
- Implementing aspects of 21 CFR Parts 210/211 as appropriate
- FDA registered as an importer/distributor for antigen products

## ISO Registrations

- Registered to ISO 9001: 2008
- Registered to ISO 13485 : 2003

## Quality Organization

- Quality Systems
- Quality Engineering
- Quality Control and Analytical Quality Lab

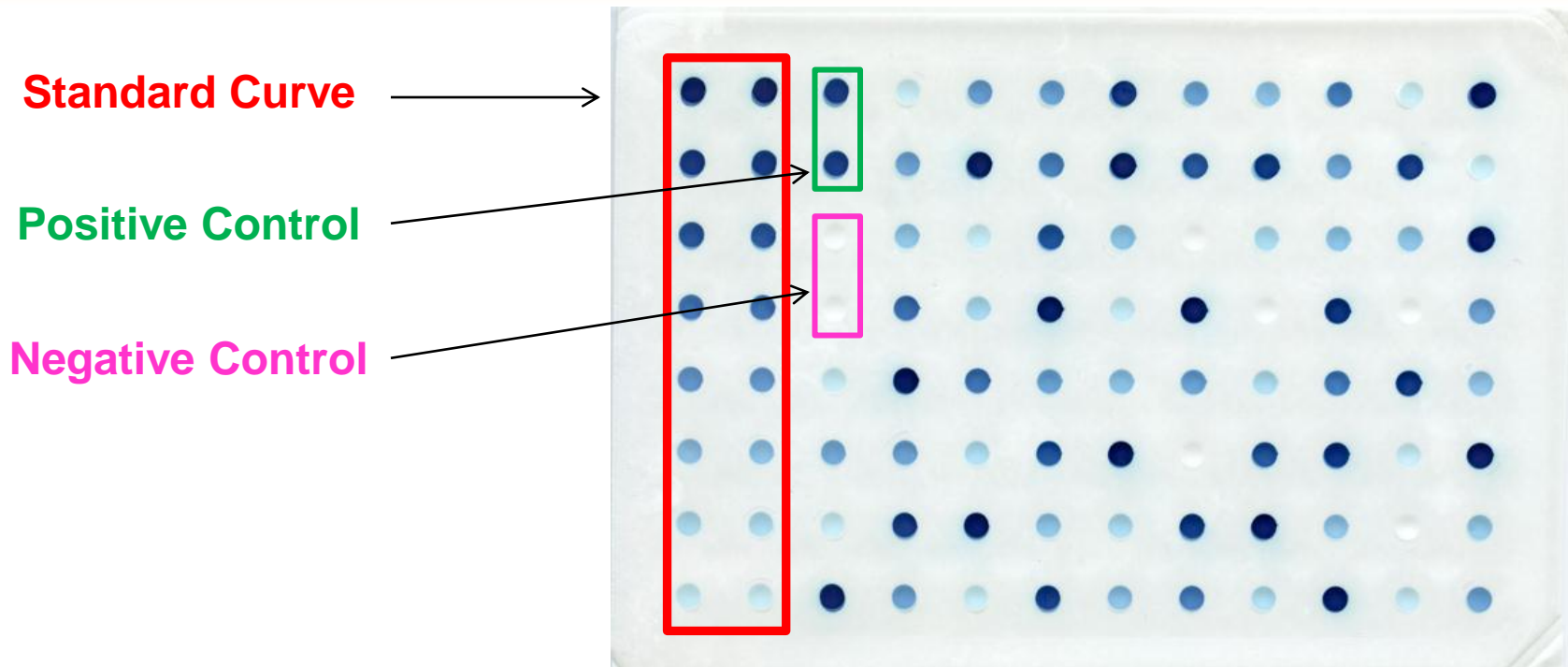
# ESPM Substrate Features

- Room temperature stability for 2 years
- Stable for 4 years at 4°C
- One-component formulation – ready to use
- Similar sensitivity to most mid-to-high level chemiluminescent membrane substrates
- Extended dynamic range with reduction of wash out at higher peroxidase concentrations

# ESPM Applications

- Western Blotting
- Dot Blots
- Line Assays
- Other Membrane Applications

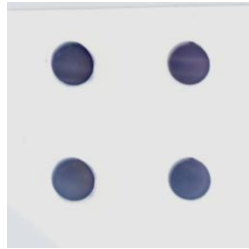
# Membrane Immunoassay Example



- Color Ranges from Dark Blue-Purple to Light Blue
- Reduces Chance of False Positives with No Background (Negative Control)
- No “Wash Out” at High Concentrations (Positive Control)

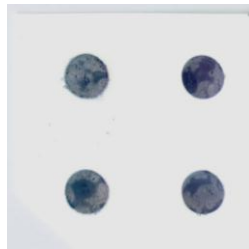
# ESPM – Extended Dynamic Range

No  
“Wash Out”

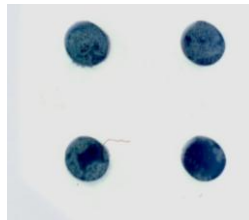


**SurModics BioFX® TMB Enhanced HRP  
Membrane Substrate (ESPM)**

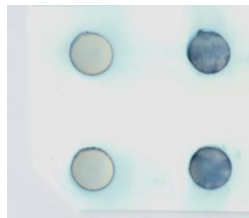
High End  
“Wash Out”



**Competitor #1**



**Competitor #2**



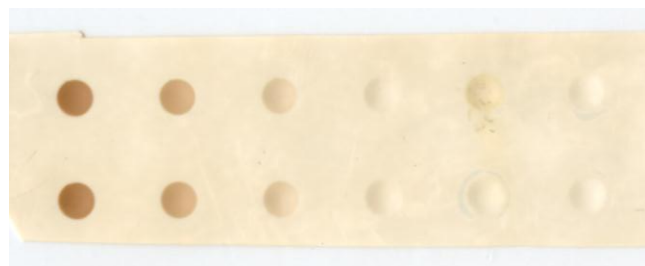
**Competitor #3**

# ESPM Sensitivity Comparisons

2    0.67    0.22    0.07    0.02    0.008    Gt x rblgG-HRP (ngs)



**SurModics BioFX® TMB Enhanced HRP Membrane Substrate (ESPM)**



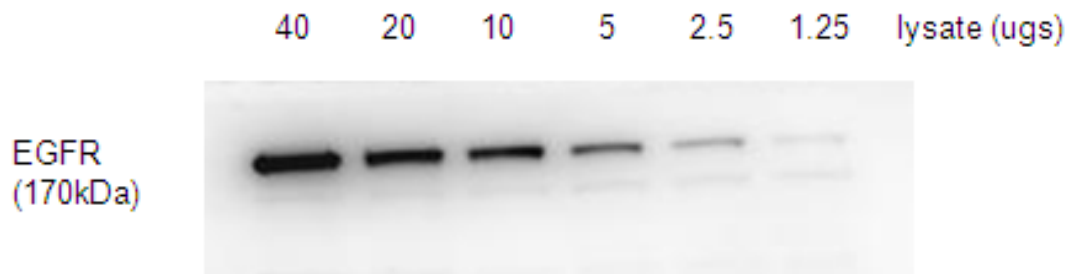
**SurModics BioFX® DAB Membrane Substrate (DABM)**



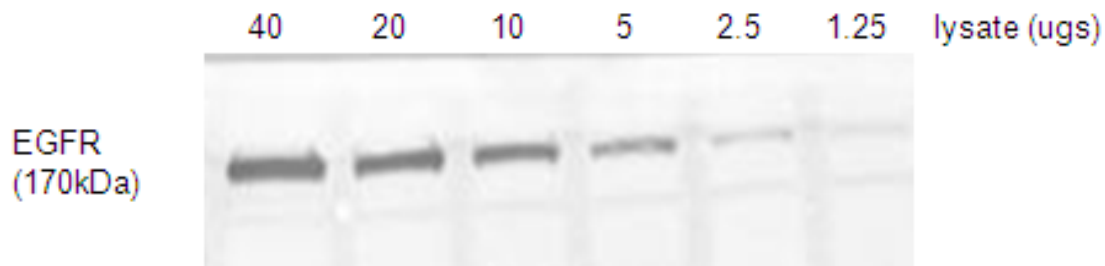
**SurModics BioFX® Chemiluminescent Super Sensitive HRP Substrate (LUMI)**

**Similar Sensitivity to Chemiluminescent Substrate without the Expensive Equipment!**

# ESPM Western Blot Comparison



**BioFX<sup>®</sup> Chemiluminescent Ultra Sensitive HRP Membrane Substrate (CHMM)**



**BioFX<sup>®</sup> TMB Enhanced HRP Membrane Substrate (ESPM)**

# Summary

- Room Temperature Stability – Ideal for Point-of-Care (POC) Applications
- Similar Sensitivity to Chemiluminescent Substrates
- Economical, No Expensive Equipment Needed
- Free Samples Available
- Please Visit Booth #824

